

# Technological Facility @ KIT

## Accelerator Technology Platform (ATP)



www.ibpt.kit.edu/atp

AMICI Technology Infrastructure – KIT (Germany)

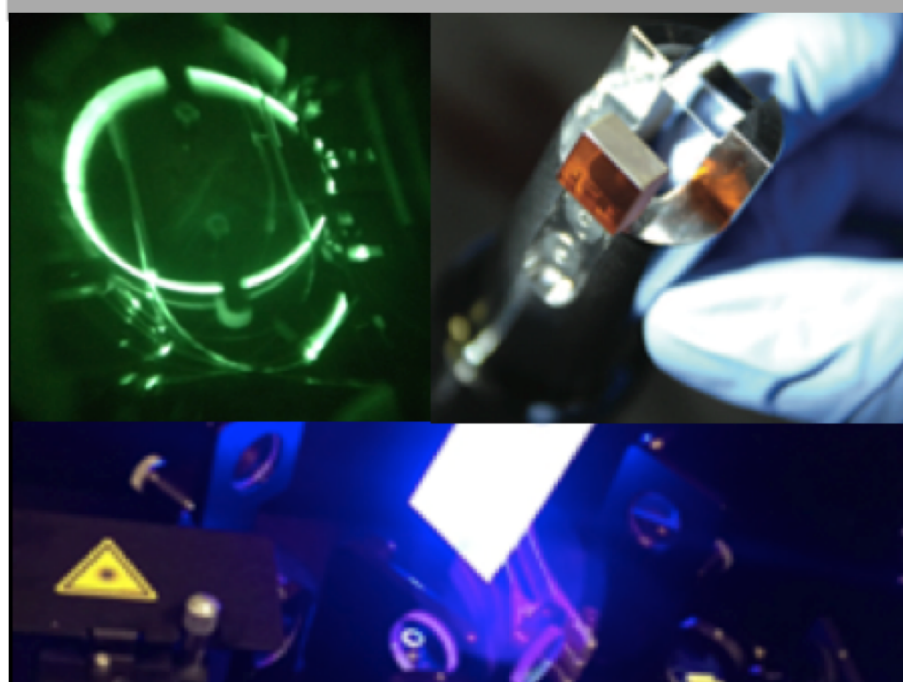
Email: [amici@ibpt.kit.edu](mailto:amici@ibpt.kit.edu)  
[www.eu-amici.eu/technology\\_infrastructure/kit](http://www.eu-amici.eu/technology_infrastructure/kit)

- KIT researches and develops cutting-edge accelerator technology in many disciplines and institutes
- ATP combines expertise of KIT's accelerator-relevant technologies and research infrastructures

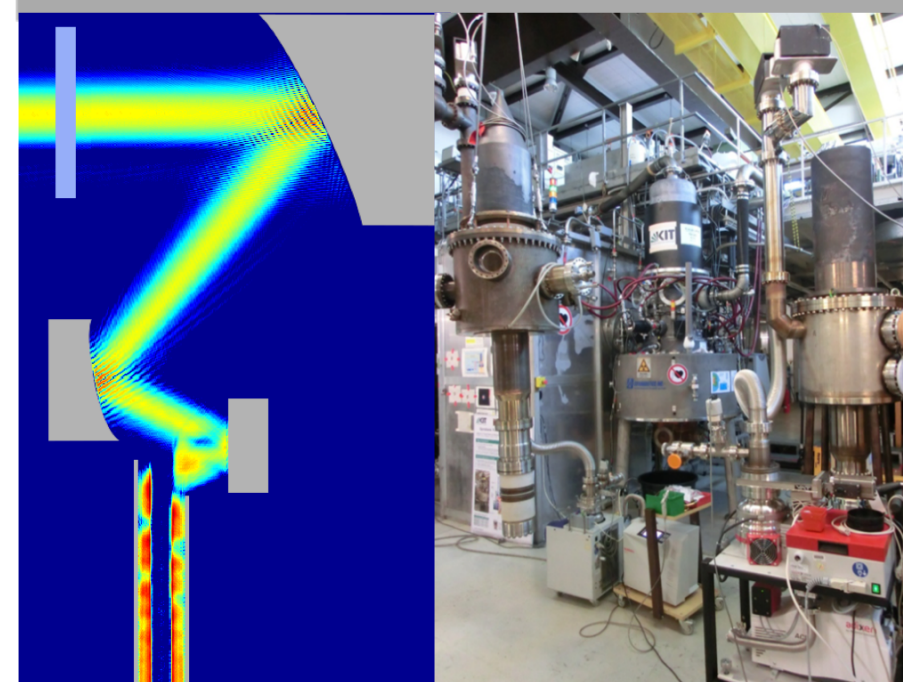
### Accelerator Technology Platform (ATP)

#### Accelerator-relevant Technologies

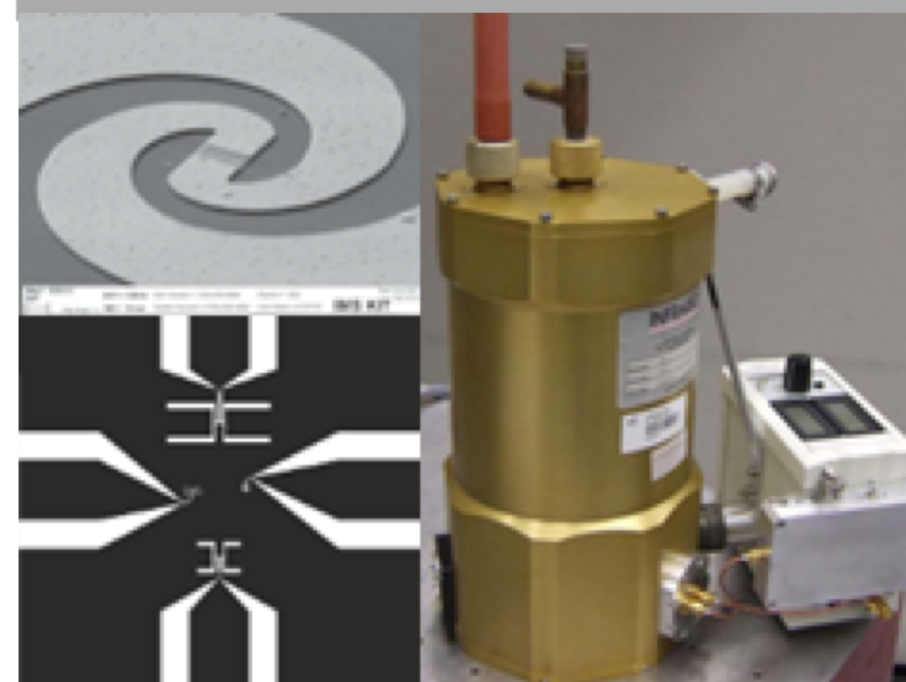
Laser Technology,  
Material Science



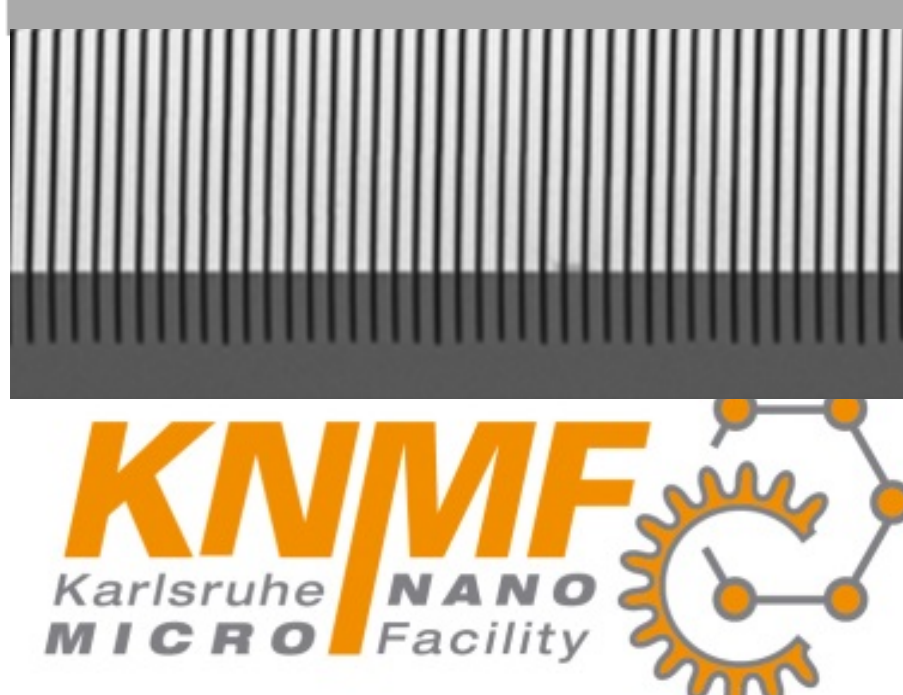
Microwave  
Technologies



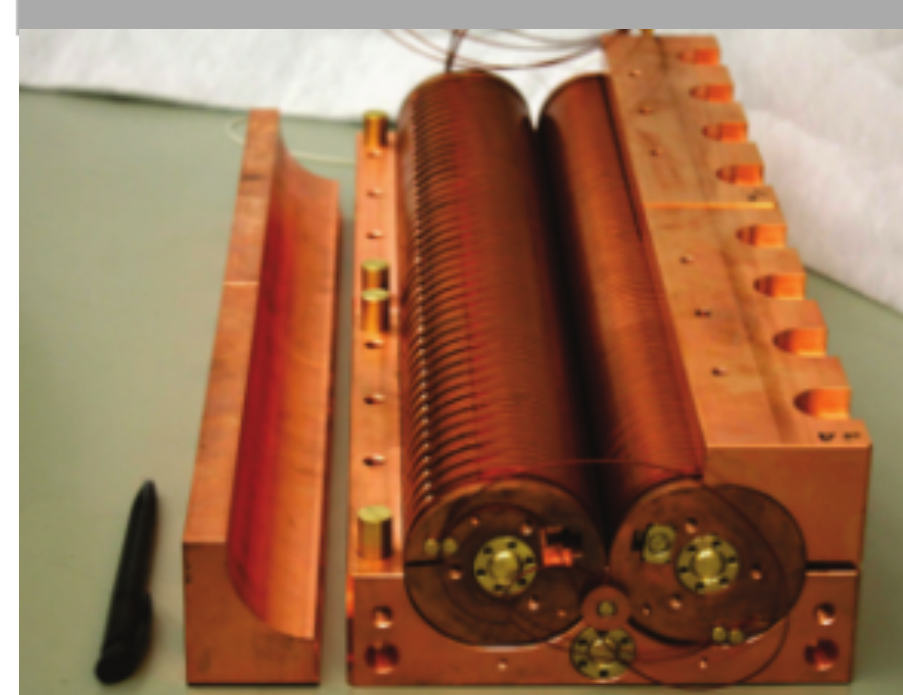
Terahertz  
Sensors



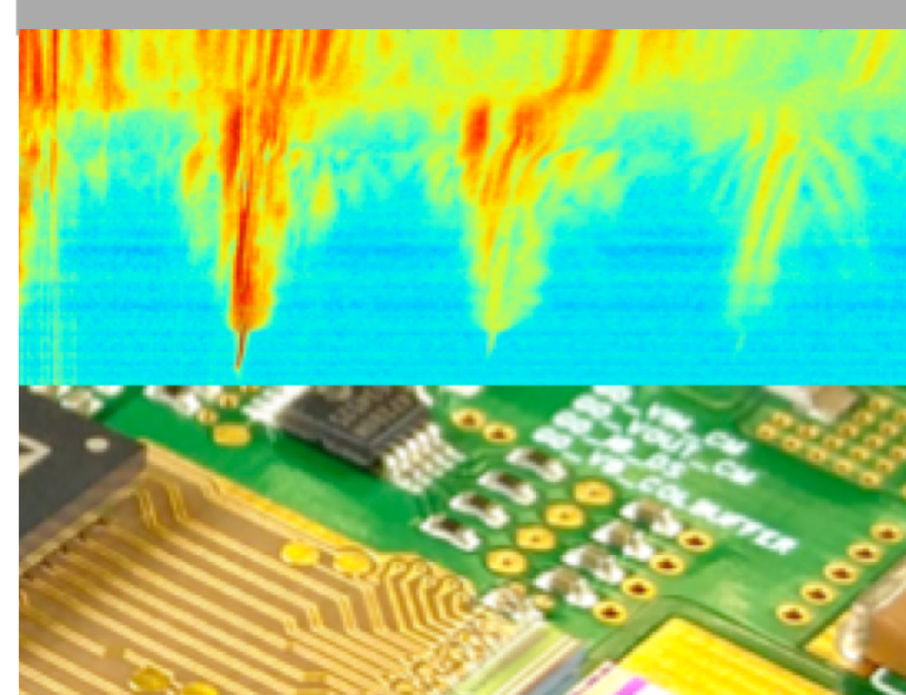
Nano- and  
Microtechnology



Compact Magnet  
Technology



Electronics,  
High Performance  
Computing



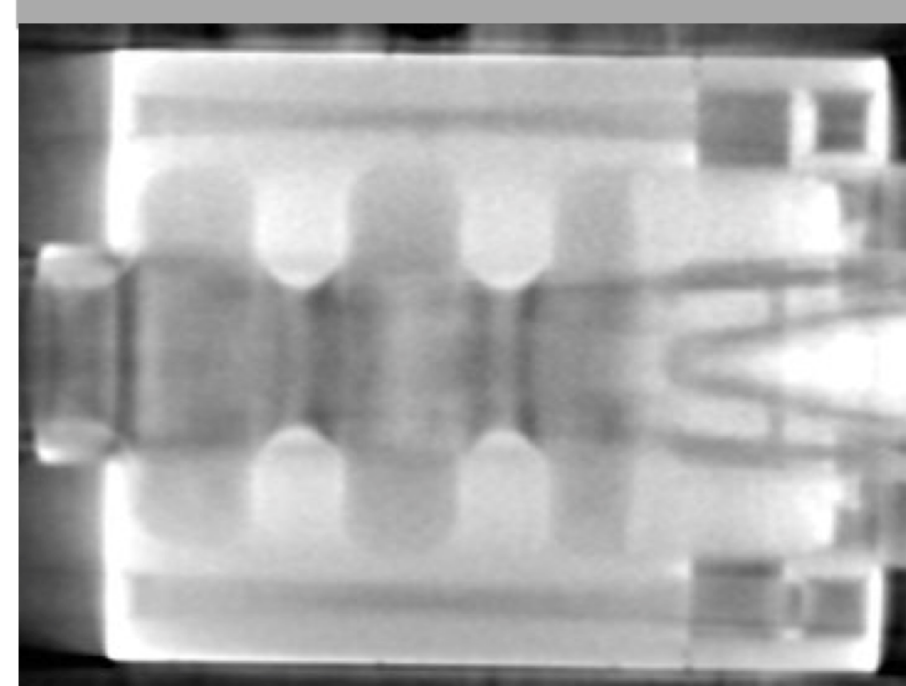
Vacuum  
Technology



Cryogenics,  
Superconductor  
Technology

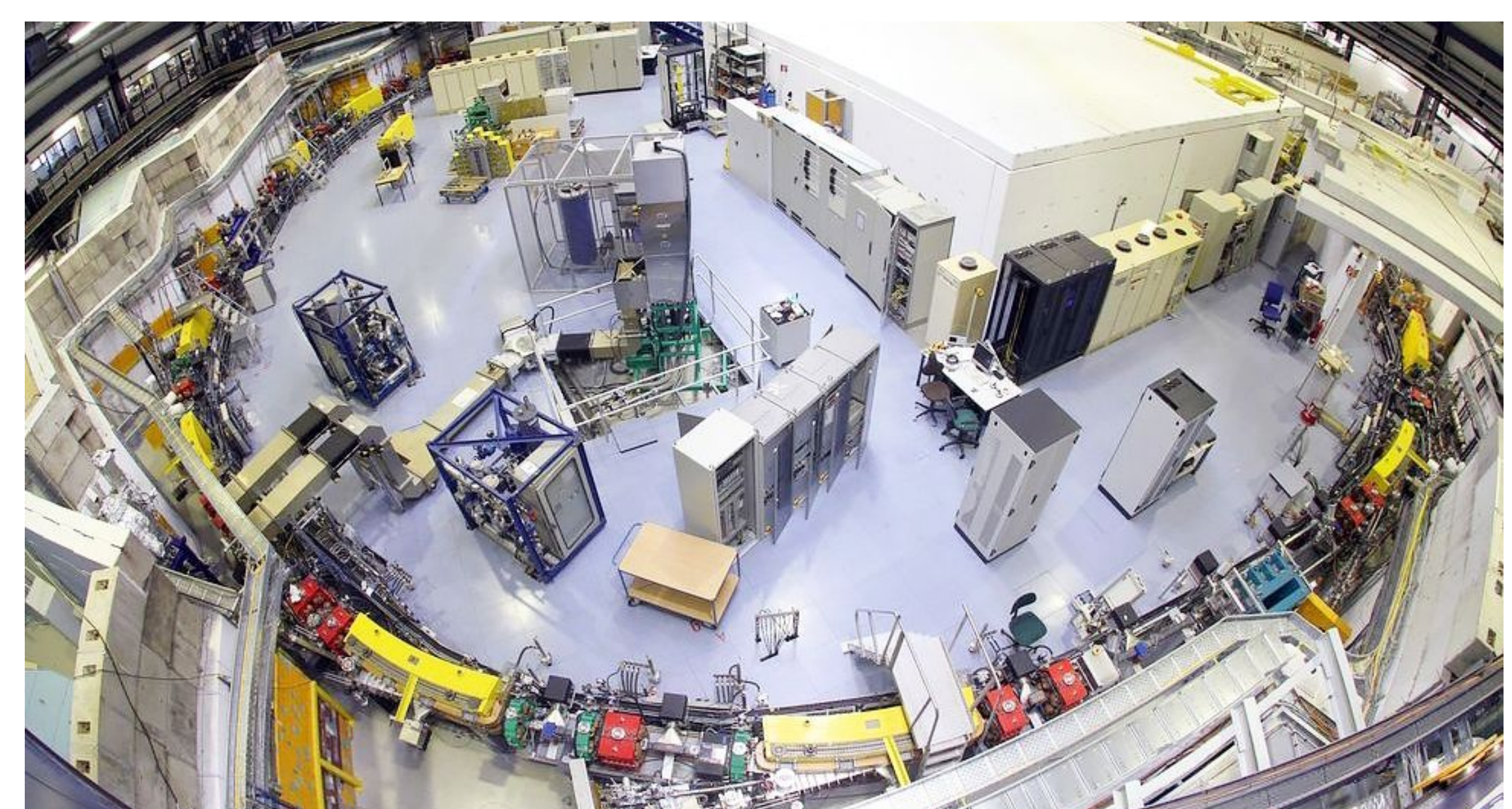


Imaging

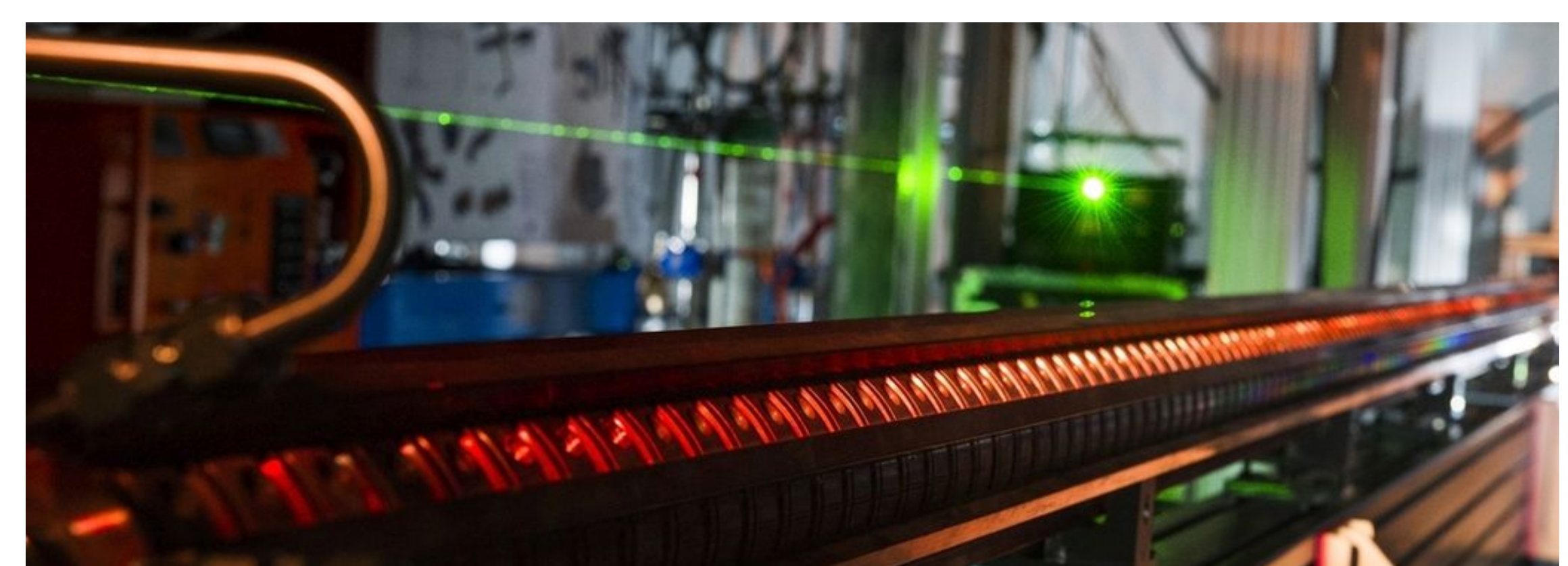


#### Research Infrastructure

KARA -  
Karlsruhe Research Accelerator



FLUTE -  
Short Pulse Linac Test Facility and THz Source



### Cooperation with Strategic Industry Partners



Example: Long-term collaboration between KIT and Bilfinger Noell GmbH to jointly develop superconducting undulators for synchrotron light sources and free electron lasers

Celebration of arrival and installation of first in-series produced superconducting undulator, SCU 20, at KIT in December 2017

